

Knowledge Organiser

HT3 How do we compose a Rhythm?

What are we learning about?:

- A. What is the importance of Pulse?
- B. How do we compose a Rhythm?
- C. Keywords
- D. What is a Polyrhythm?
- E. How can we add Pitch to a Rhythm?
- F. What does a performance with Pitch, Rhythm and Dynamics look like?

C:

Keywords

Semibreve	Note that lasts for 4 beats
Minim	Note that lasts for 2 beats
Crotchet	Note that lasts for 1 beat
Quaver	Note that lasts for 1/2 beat
Semiquaver	Note that lasts for 1/4 beat

D:

What is a Polyrhythm?

A polyrhythm consists of layers of simple rhythms.



Keywords for this Half Term

Semibreve
Minim
Crotchet
Quaver
Semiquaver

E:

How can we add Pitch to a Rhythm?

Stems Up Stems Down



Making sure that we use stem direction is very important as it helps to declutter a piece of Music. The rule is that below the middle line the stem goes on the right and above the middle line the stem goes on the left.

A:

What is the importance of Pulse?

Heartbeat
of the
Music



F:

What does a performance with Pitch, Rhythm and Dynamics look like?

Dynamics

piano

p

quiet

forte

f

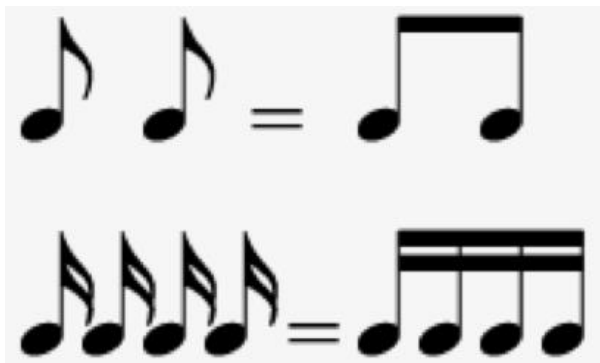
loud

B:

How do we compose a Rhythm?

We compose Rhythms using Pencil so it easy to modify if we make a mistake

In musical notation, a beam is a horizontal or diagonal line used to connect multiple consecutive notes



Term

Symbol

Value

semibreve



4 beats

minim



2 beats

crotchet



1 beat

quaver



1/2 beat

pair of quavers



1/2 + 1/2 = 1

rest



1 beat

Knowledge Organiser

HT3 How do we compose a Rhythm?

What are we learning about?:

- A. What is the importance of Pulse?
- B. How do we compose a Rhythm?
- C. Keywords
- D. What is a Polyrhythm?
- E. How can we add Pitch to a Rhythm?
- F. What does a performance with Pitch, Rhythm and Dynamics look like?

C:

Keywords

Semibreve	Note that lasts for <input type="text"/> beats
Minim	Note that lasts for <input type="text"/> beats
Crotchet	Note that lasts for <input type="text"/> beat
Quaver	Note that lasts for <input type="text"/> beat
Semiquaver	Note that lasts for <input type="text"/> beat

D:

What is a Polyrhythm?

A polyrhythm consists of layers of simple rhythms.



Keywords for this Half Term

Semi

Minim

het

Quaver

quaver

E:

How can we add Pitch to a Rhythm?

Stems Up Stems Down



Making sure that we use stem direction is very important as it helps to declutter a piece of Music. The rule is that below the middle line the stem goes on the and above the middle line the stem goes on the .

A:

What is the importance of Pulse?

Heartbeat
of the
Music



F:

What does a performance with Pitch, Rhythm and Dynamics look like?

Dynamics

piano

quiet

f

B:

How do we compose a Rhythm?

We compose Rhythms using so it easy to modify if we make a mistake

In musical notation, a beam is a horizontal or diagonal line used to connect multiple consecutive notes



Term	Symbol	Value
<input type="text"/>		<input type="text"/> beats
minim	<input type="text"/>	2 beats
<input type="text"/>		1 beat
quaver		<input type="text"/> beat
pair of quavers	<input type="text"/>	1/2 + 1/2 = 1
<input type="text"/>		1 beat