

## Knowledge Organiser

### What are we learning about?:

- How do you read Bass Clef Notation?
- Why do some instruments use Bass Clef Notation?
- Keywords
- What is an Alberti Bass line?
- Why are accidentals in composition so important?
- What different ways can you play accompaniment?

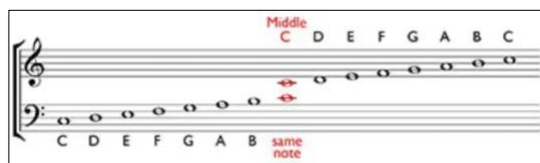
### Keywords for this Half Term

Bass Clef  
32 Bar Song Form  
Alberti Bass  
Natural  
Accompaniment

### A:

#### How do you read Bass Clef Notation?

The treble clef and bass clef overlap, meeting at Middle C, as shown in the example below. This is the first note with a ledger line through the middle of it below the last line in the treble clef, and above the top line in the bass clef. Whichever way it is drawn, Middle C is the same note – it is the C near the centre of a full piano keyboard.



### B:

#### Why do some instruments use Bass Clef Notation?

The bass clef is a way to notate pitches below middle C. It is also commonly known as F clef because it locates F on the staff.

## HT1 What is Musical Accompaniment?

### C:

#### Bass Clef

### Keywords

Symbol used for writing Music for lower pitched instruments

#### 32 Bar Song Form

AABA Structure with each section 8 bars long

#### Alberti Bass

A type of broken chord used within the Classical Era

#### Natural

An accidental used to cancel out a sharp

#### Accompaniment

Anything other than the Melody

### D:

#### What is an Alberti Bass line?

Alberti Bass is a way of playing the notes of a chord in a particular order: lowest (root), highest (fifth), middle (third), highest (fifth), repeated several times as a Bass Line accompaniment, over which a melody (the main tune) can be played. Alberti Bass Line patterns were common in piano music of the Classical period.

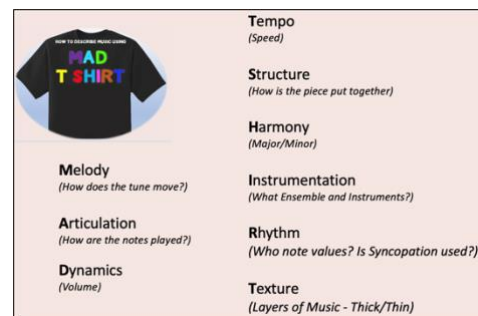


ROOT	FIFTH	THIRD	FIFTH
Lowest	Highest	Middle	Highest

### E:

#### Why are accidentals in composition so important?

Composers use accidentals because playing within one set of notes all the time can make the Music sound very similar and at times boring. Using accidentals can provides different emotions and can offer tension and drama within the story of a piece of music.



### F:

#### What different ways can you play accompaniment?

Musical accompaniment is usually found in the Bass Clef line



- Chord
- Broken Chord
- Walking Bass Line
- Alberti Bass Line
- Pedal Notes



## Knowledge Organiser

### What are we learning about?:

- How do you read Bass Clef Notation?
- Why do some instruments use Bass Clef Notation?
- Keywords
- What is an Alberti Bass line?
- Why are accidentals in composition so important?
- What different ways can you play accompaniment?

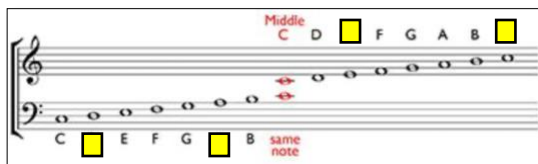
### Keywords for this Half Term

Bass   
 Bar Song Form  
 Alberti   
 Natural  
 Accompaniment

#### A:

#### How do you read Bass Clef Notation?

The  clef and  clef overlap, meeting at Middle C, as shown in the example below. This is the first note with a ledger line through the middle of it below the last line in the treble clef, and above the top line in the bass clef. Whichever way it is drawn, Middle C is the same note – it is the C near the centre of a full piano keyboard.



#### B:

#### Why do some instruments use Bass Clef Notation?

The bass clef is a way to notate pitches below middle . It is also commonly known as F clef because it locates F on the staff.



## HT1 What is Musical Accompaniment?

#### C:

#### Bass Clef

#### Keywords



AABA Structure with each section 8 bars long



A type of broken chord used within the Classical Era



An accidental used to cancel out a sharp

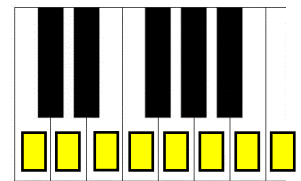
#### Accompaniment



#### D:

#### What is an Alberti Bass line?

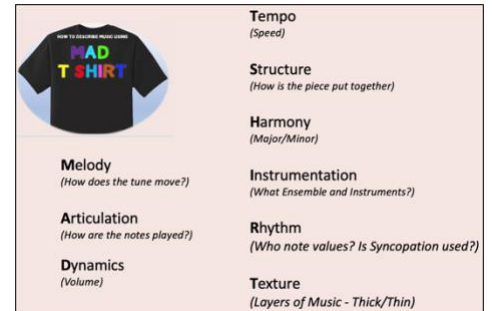
Alberti Bass is a way of playing the notes of a chord in a particular order: lowest (root), highest (fifth), middle (third), highest (fifth), repeated several times as a Bass Line accompaniment, over which a melody (the main tune) can be played. Alberti Bass Line patterns were common in piano music of the Classical period.



#### E:

#### Why are accidentals in composition so important?

Composers use accidentals because playing within one set of notes all the time can make the Music sound very similar and at times boring. Using accidentals can provides different emotions and can offer tension and drama within the story of a piece of music.



#### F:

#### What different ways can you play accompaniment?

Musical accompaniment is usually found in the Bass Clef line

